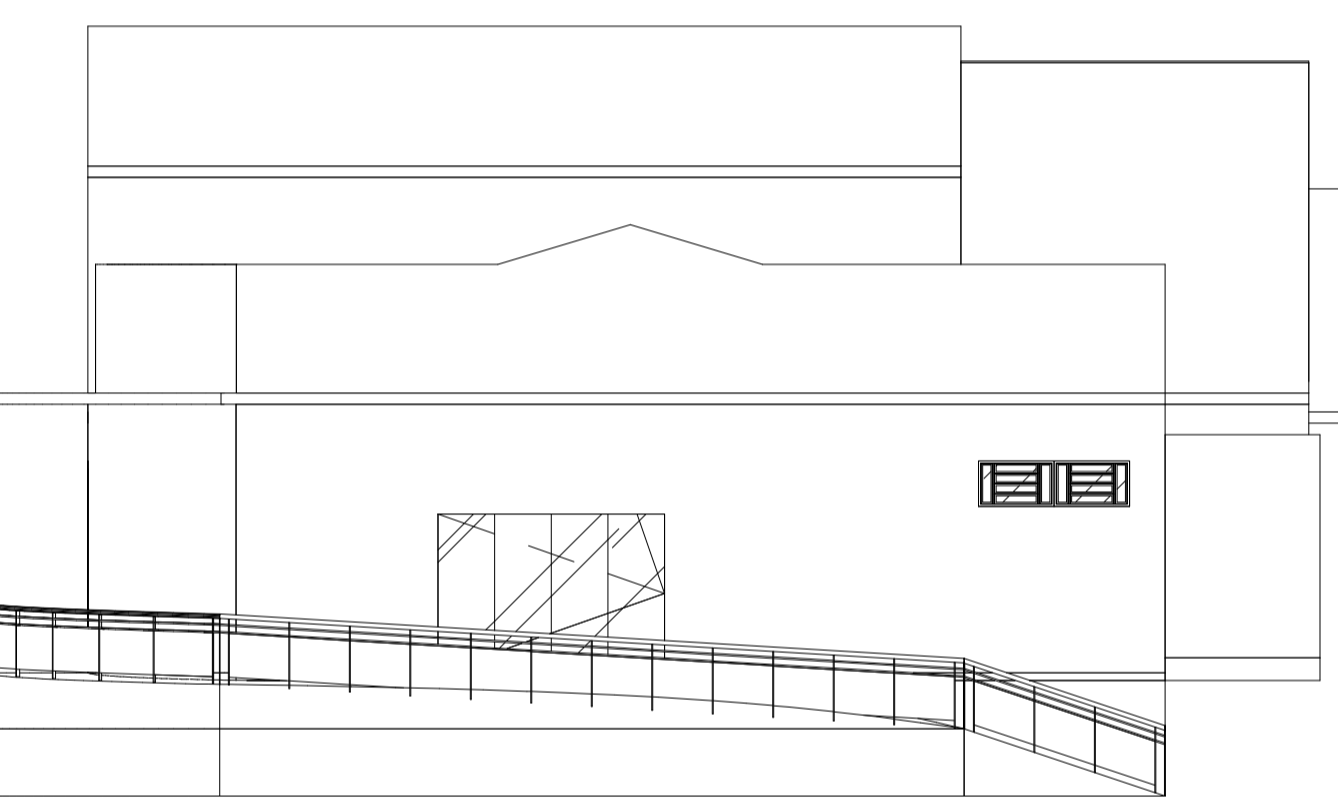
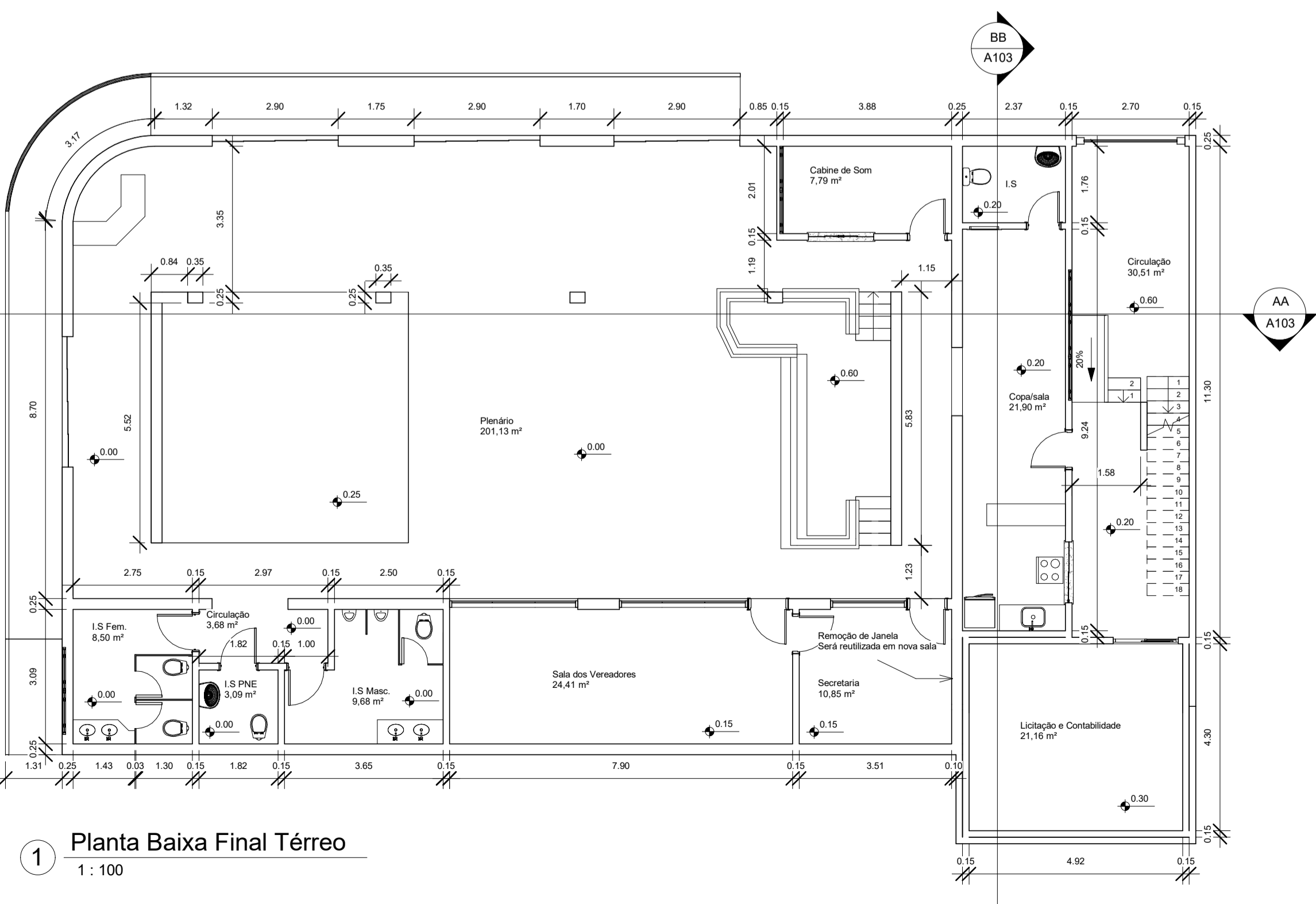


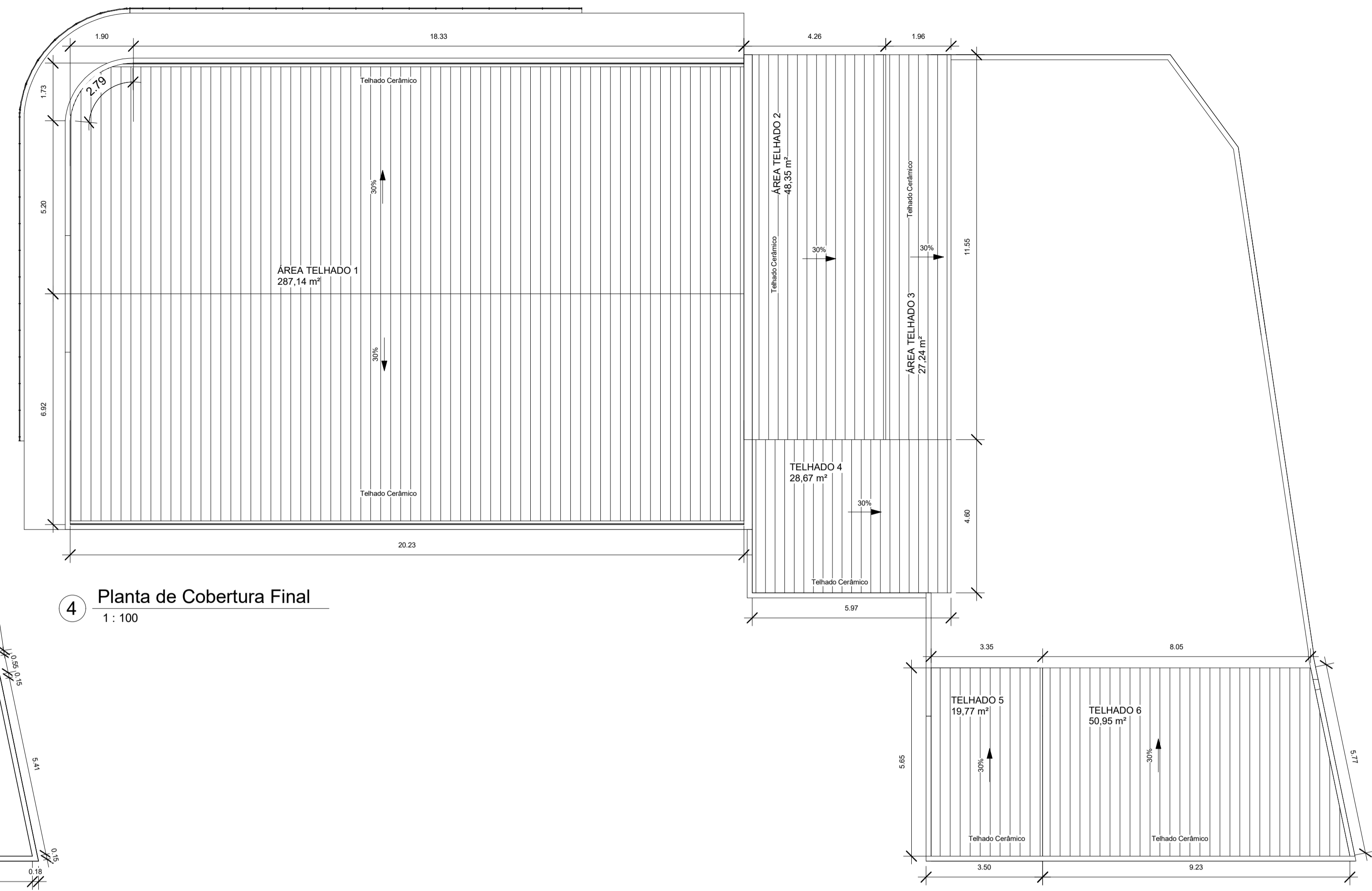
2 Planta Baixa Final Pav. 1  
1 : 100  
ÁREA DO TERRENO= 634,33 m²



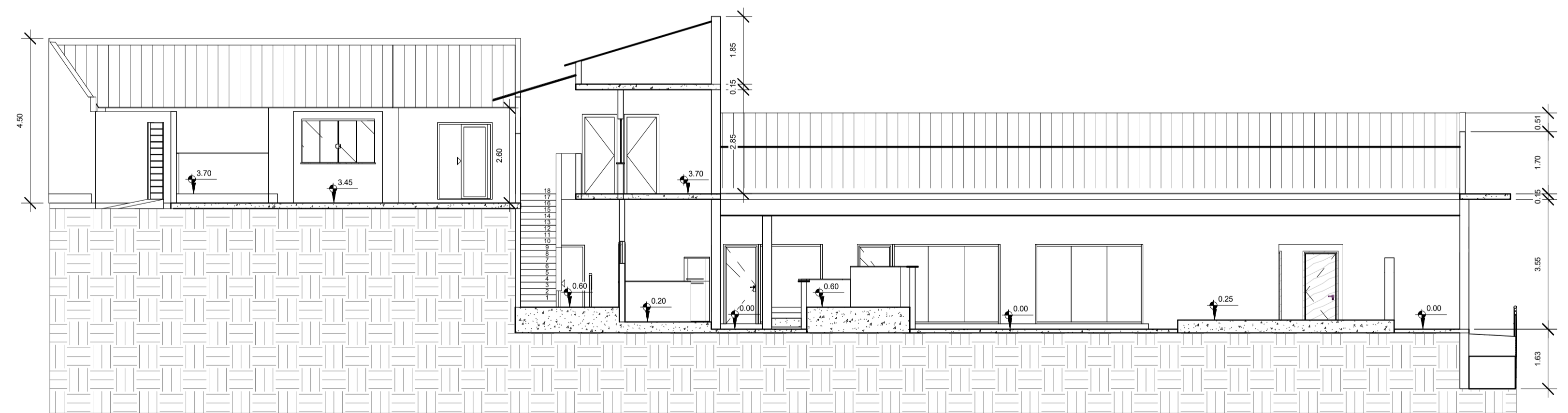
6 FACHADA  
1 : 100



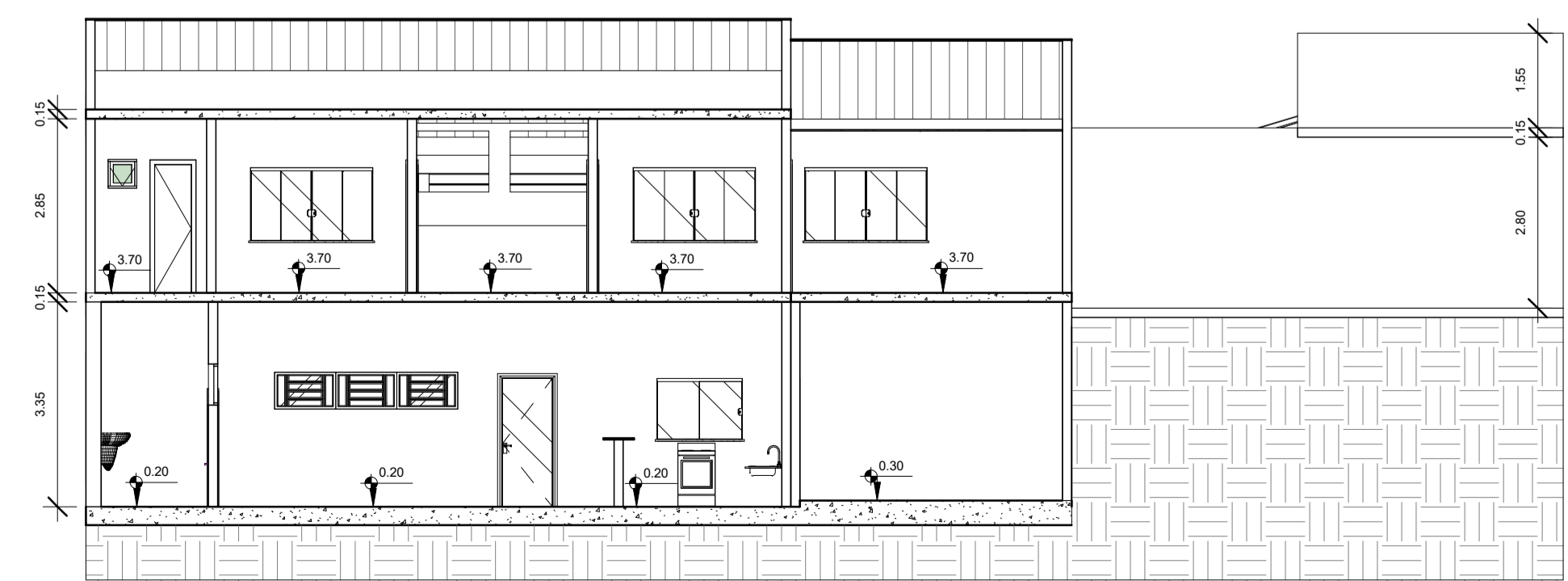
1 Planta Baixa Final Térreo  
1 : 100




4 Planta de Cobertura Final  
1 : 100



3 Corte AA  
1 : 100



5 Corte BB  
1 : 100

 <b>AMF ENGENHARIA</b> Aldeir Moreira Filho Eng. Civil (38) 9 8449086	<b>OBRA:</b> PROJETO ARQUITETÔNICO DE AMPLIAÇÃO E REFORMA FINAL		
	<b>CLIENTE:</b> Câmara Municipal de Brasília de Minas CNPJ: 00.474.000/0001-23		
<b>CONTEÚDO:</b> Planta baixa térreo Planta Baixa Pav. 1 Planta de Cobertura Cortes	<b>ENDEREÇO:</b> Rua Coronel Sansão, nº 275, Centro, Brasília de Minas-MG Cep: 39.330-000		
	<b>DATA:</b> 15 de janeiro de 2023	<b>Nº DA PRANCHA</b> <b>A103 / 03</b>	
<b>ENGENHEIRO:</b> Aldeir Moreira Filho CREA: 199.432/D		<b>ESCALA:</b> 1 : 100	